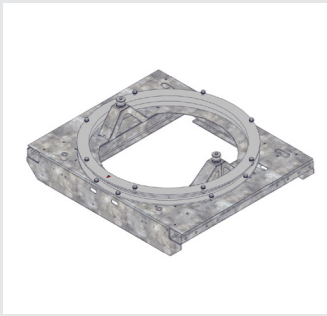
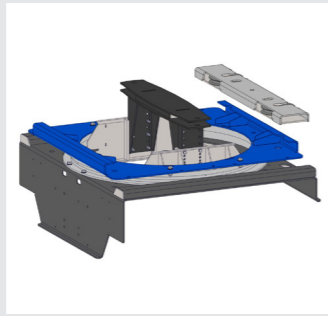


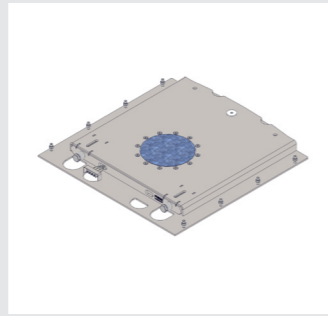
OPTIONS



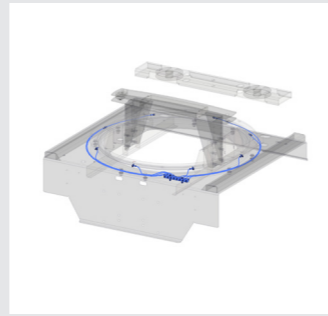
GALVANIZED



TURNTABLE
MOUNTING PLATE



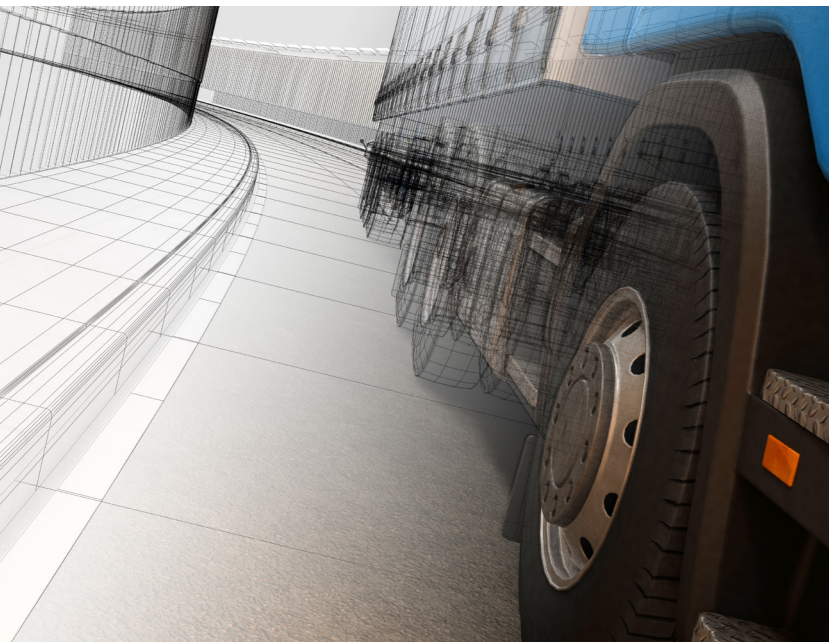
FRONT UNIT COVER



GREASING KIT

CUSTOMER SPECIFIC OPTIONS

Looking for customer specific options? **Ask your account manager for more information.**



ENGINEERING SERVICE

At IMS Group, we always aim to provide the best and that is why we only supply premium brand products. But we go one step further than that: our R&D department works with trailer manufacturers to design smart technical solutions that will really make a difference. IMS Group employs a number of highly experienced service engineers who provide essential support to both trailer manufacturers and end users. Our engineers can advise on original equipment specifications, offer hands-on assistance during commissioning and help resolve application problems with trailers on the road.

GREENSTEERING SYSTEM



MORE INFO

For more information, please contact our steering systems team at salestrailersystems@group-ims.com or call +31 342 497 881.

IMS Group, Nijverheidsweg 50, 3771 ME Barneveld, +31 342 497 979, www.group-ims.com



IMS Group is the exclusive distributor for a range of premium products, including the leading brands: VSE, SEM, GreenSteering & ALEXRIMS. IMS Group supports them with unrivalled sales advice, technical support and aftermarket service.

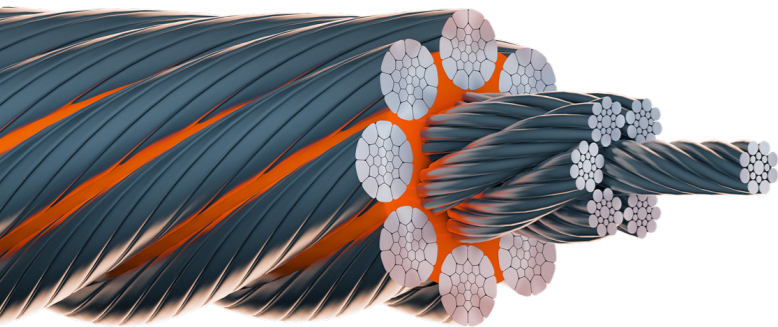
CABLE STEERING SYSTEMS FOR TRAILERS

THAT STEERS UP TO 4 AXLES ON YOUR TRAILER.



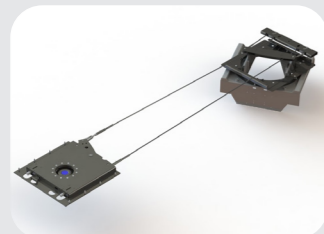
GREENSTEERING SYSTEM

Striving for a future with less particulate matter and less CO2 emissions; then choose the mechanical cable control from GreenSteering. Not only the environment benefits. Minimal maintenance costs, maximum payload and exceptional maneuverability ensure a low TCO and an optimal driving experience for the driver. GreenSteering is a patented brand of the IMS Group.

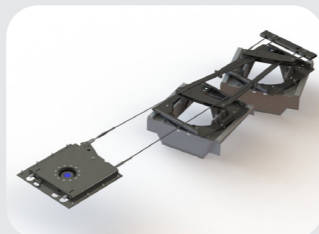


CABLE BENEFITS

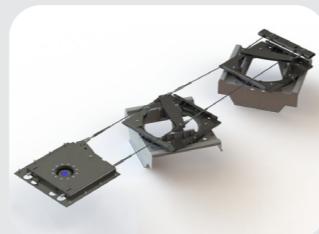
- ✓ 16 separate cables with 327 wires
- ✓ Minimum breaking strength of 23 tons
- ✓ Fully galvanized
- ✓ Plastic matrix
- ✓ Internally lubricated
- ✓ Very flexible with a long service life thanks to special design



XST21A



XST32A



XST32X



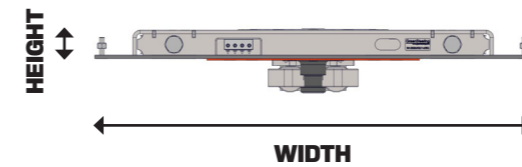
XST44X

WHY GREENSTEERING?

- ✓ **Linear steering**
The linear steering behavior ensures extreme maneuverability and makes turning and reversing extremely easy
- ✓ **Environment**
The absence of a diagonal steering rod in the chassis gives engineering space for for example coil trailers or tank trailers.
- ✓ **Comfortable steering behavior**
Thanks to the absence of a rigid connection you will experience a very smooth and comfortable steering behaviour.
- ✓ **Low TCO**
With a Greensteering system you save on fuel consumption and wear. Your tyres last longer and you prevent damage because there is less friction on the road surface.

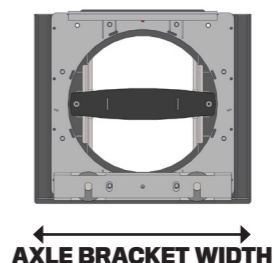
FRONT UNITS

Fifth wheel load	Width	Height	Manufacturing	Kingpin	Kingpin Capacity
Standard	1025 mm	80 mm	Boltable	2"	18 Ton
Heavy Duty	1025 mm	100 mm	Boltable	2" / 3.5"	24 Ton



REAR UNITS

Capacity	Axle bracket width
10 Ton	980 mm Twin Tyre
10 Ton	1200 mm Single Tyre
10 Ton	1300 mm Single Tyre



STANDARD OPTIONS

- ✓ Conservation complete in cathodic dip painting

