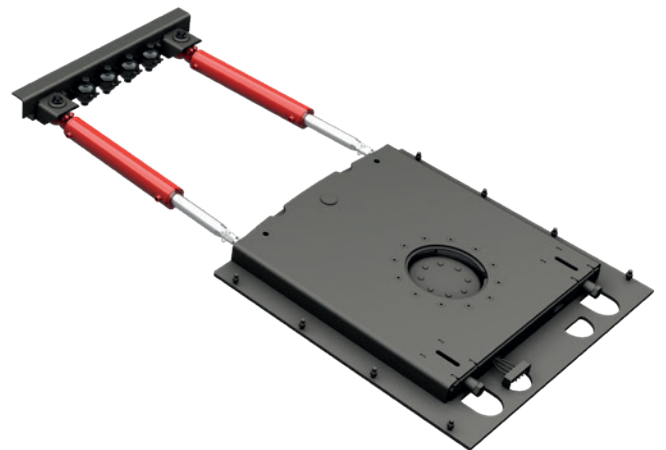


SEM HYDRAULIC STEERING SYSTEM

The SEM HR is used for heavy duty and special transport. Exceptional length and extendable trailers can be steered with the Hydraulic SEM steering system. The system is applicable for longitudinal I-beam chassis and central beam chassis. The SEM HR steers 1 to 4 axles.



NEW



THE MAIN ADVANTAGES

- ✓ Standard with easy to use remote control
- ✓ Easy to install
- ✓ No complex electronics
- ✓ Low maintenance
- ✓ Suitable for extendable trailers
- ✓ Easy alignment via remote control

TECHNICAL SPECIFICATIONS

Number of steered axles	1-4
Steering angle	up to 45 degrees
Kingpin options	2" and 3,5"
Fifth wheel load	24t max
Axle load	10t max
Chassis centre front unit	1025mm
Spring centres	980/1200/1300mm*

*1200/1300mm under development.

Galvanised rear unit possible

MORE INFO

For more information, please contact our steering systems team at saletrailersystems@group-ims.com or call +31 342 497 881.

IMS Group, Nijverheidsweg 50, 3771 ME Barneveld, +31 342 497 979, www.group-ims.com

