

Kingpins

Type Approved Safety Parts, Drop Forged, and High-Grade Hardened and Tempered



Order Numbers

2" (Ø 50 mm)

NEW	OLD			Plate thickness [mm]
SAF 50S15	GF* 101 109	HOLLAND 65	HOLLAND OLD	
Kingpin, complete				
1030 30 000002 0	662 101 108	KP-E-65212	62218	12
1030 30 000003 0	662 101 119	KP-E-65210	62018	10
1030 30 000004 0	662 101 117	KP-E-65208	62818	8
		KP-E-65207	62718	7
1030 30 000005 0	662 101 491	KP-E-65206	62618	6
Flange				
2031 10 000002 0	662 101 107	XA-E-52212	51238	12
2031 10 000003 0	662 101 120	XA-E-52210	51038	10
2031 10 000004 0	662 101 118	XA-E-52208	51838	8
		XA-E-52207	51738	7
2031 10 000005 0	662 101 490	XA-E-52206	51638	6
Pin				
2108 10 000002 0	662 101 109	XA-E-51265	51050	
Bolts M14x30				
3 341 2928 08*	659 112 320			

3,5" (Ø 90 mm)

NEW	OLD			Plate thickness [mm]
SAF 90S15	GF* 101 169	HOLLAND	HOLLAND OLD	
Kingpin, complete				
1030 30 000009 0	662 101 170	KP-E-67312	62216	12
1030 30 000010 0	662 101 241	KP-E-67310	62016	10
1030 30 000011 0	662 101 304	KP-E-67308	62816	8
		KP-E-67307	62716	7
		KP-E-67306	62616	6
Flange				
2031 10 000002 0	662 101 107	XA-E-52212	51238	12
2031 10 000003 0	662 101 120	XA-E-52210	51038	10
2031 10 000004 0	662 101 118	XA-E-52208	51838	8
		XA-E-52207	51738	7
		XA-E-52206	51638	6
Pin				
2108 10 000005 0	662 101 169	XA-E-51367	51042	
Bolts M14x30				
3 341 2928 08*	659 112 320			

* must always be exchanged

2" (Ø 50 mm)

NEW	OLD			Plate thickness [mm]
SAF 50S18	GF* 102 022	HOLLAND 66	HOLLAND OLD	
Kingpin, complete				
1030 30 000012 0	662 102 604	KP-E-66216	62015	16
Flange				
2031 10 000009 0	662 102 207	XA-E-52016	51027	16
Pin				
2108 10 000006 0	662 102 022	XA-E-51266	51044	
Bolts M20x50				
2088 10 000006 0*	662 102 208			

3,5" (Ø 90 mm)

NEW	OLD			Plate thickness [mm]
SAF 90S18	GF* 102 021	HOLLAND 63	HOLLAND OLD	
Kingpin, complete				
1030 30 000014 0	662 102 603	KP-E-63316	62011	16
Flange				
2031 10 000009 0	662 102 207	XA-E-52016	51027	16
Pin				
2108 10 000007 0	662 102 021	XA-E-51363	51010	
Bolts M20x50				
2088 10 000006 0*	662 102 208			

* must always be exchanged

2" (Ø 50 mm)

GF*	HOLLAND	HOLLAND	Plate thickness [mm]
102 020	64	OLD	
Kingpin, complete			
662102600	KP-E-64212	62124	12
662102601	KP-E-64210	62104	10
662102602	KP-E-64208	62804	8
Flange			
662102200	XA-E-52112	51240	12
662102201	XA-E-52110	51040	10
662102202	XA-E-52108	51840	8
662102227			6
Pin			
662102020K	XA-E-51264	51063	
Wheel stud			
662102206			
Flat range nut			
662102211			
Spring washer			
662102212			

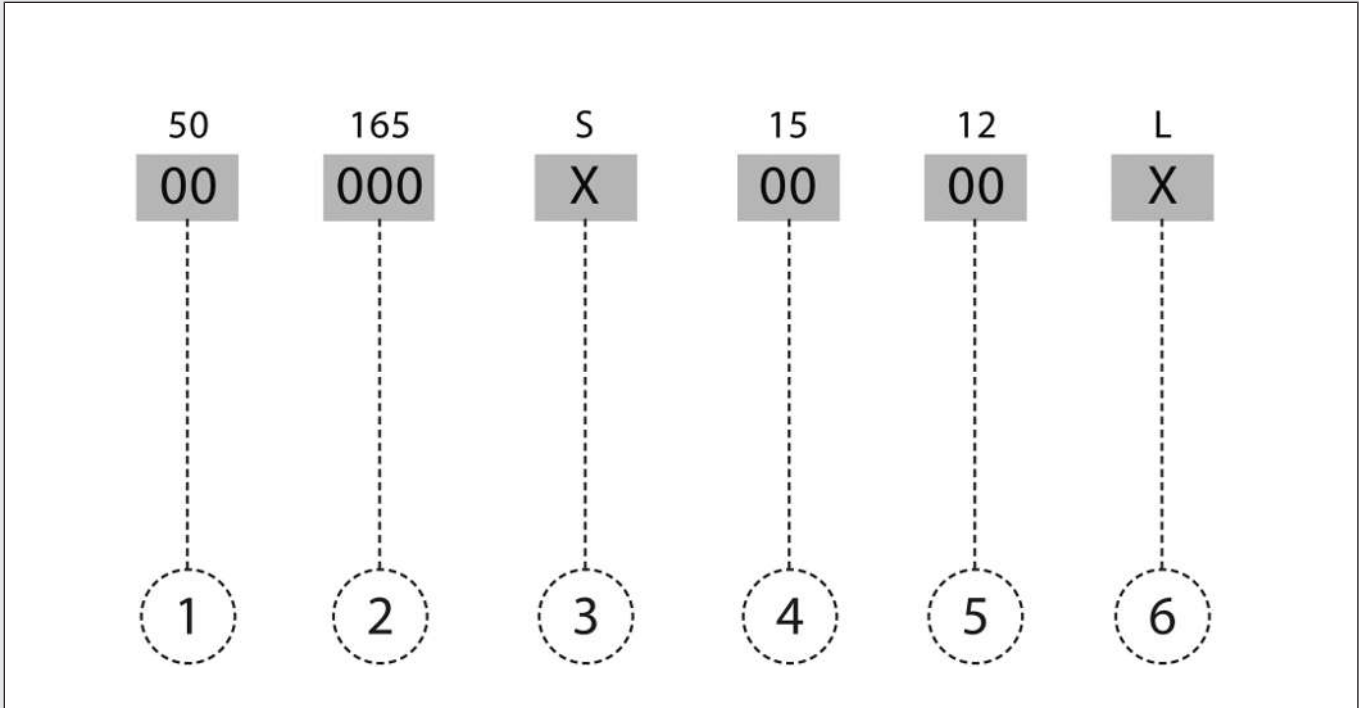
2" (Ø 50 mm)

GF*	HOLLAND	HOLLAND	Plate thickness [mm]
101 055		OLD	
Kingpin, complete			
662101057			12
662101171			10
662101074			8
662101369**			8
Bushing			
662101056			12
662101172			10
662101073			8
Pin			
662102055			
Washer			
659120236			
Castellated nut M56x2			
659115208			
Cotter pin			
659130023			

* No Type approval. No longer available.

** Without cone bushing

Type Marking



This example is a description of the type marking. The letters are marked with an "X" and the numbers with "0".

1	SIZE 50 = 2 inches / 90 = 3.5 inches
2	D-VALUE 165 = 165 kN / 175 = 175 kN / 320 = 320 kN
3	ATTACHMENTS S = with bolts
4	PITCH CIRCLE DIAMETER 15 = 150 mm / 18 = 180 mm
5	SEMI-TRAILER SKID-PLATE THICKNESS 06 = 6 mm / 08 = 8 mm / 10 = 10 mm / 12 = 12 mm / 16 = 16 mm
6	MARKING SPEC. TYPES L = steering

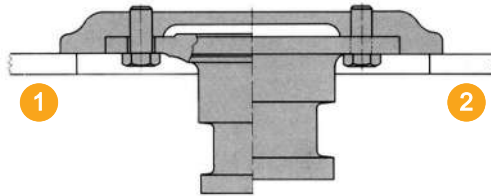
SAF kingpins may be installed using appropriate flanges from Georg Fischer +GF+ and HOLLAND.

Type		Fifth wheel skid plate	Type approval
50165S1506	50S15	6 mm	E1 55R – 01 2289
50165S1508		8 mm	
50165S1510		10 mm	
50165S1512		12 mm	
90165S1508	90S15	8 mm	E1 55R – 01 2371
90165S1510		10 mm	
90165S1512		12 mm	
50165S1816	50S18	16 mm	E1 55R – 01 2418
90320S1816	90S18	16 mm	E1 55R – 01 2426

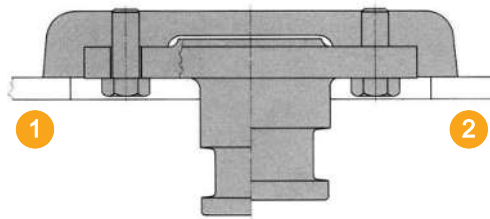


- Installation must be carried out in accordance with SAF-HOLLAND mounting and operating instructions, plus all applicable national regulations (e.g. in Germany StVZO).
- After dismantling, original SAF-HOLLAND screws must always be used for re-mounting.
- The permissible load limit (D-value) is valid for normal road traffic and under conditions prevailing in Europe. Please consult us in the event of any deviations from this.

Overview of Product Range



1	SAF 50S15 2"	2	SAF 90S15 3,5"
---	-----------------	---	-------------------



1	SAF 50S18 2"	2	SAF 90S18 3,5"
---	-----------------	---	-------------------

Type 50S15



- Diameter (Inch): 2
- Mounting: bolted flange
- Type: flanged
- Pitch circle diameter (mm): 150
- D-value (kN): 165
- Weight (kg): 12.5

TYPE APPROVAL:

- ECE type approval no.: E1*55R01/09*2289*02

Type 50S15L

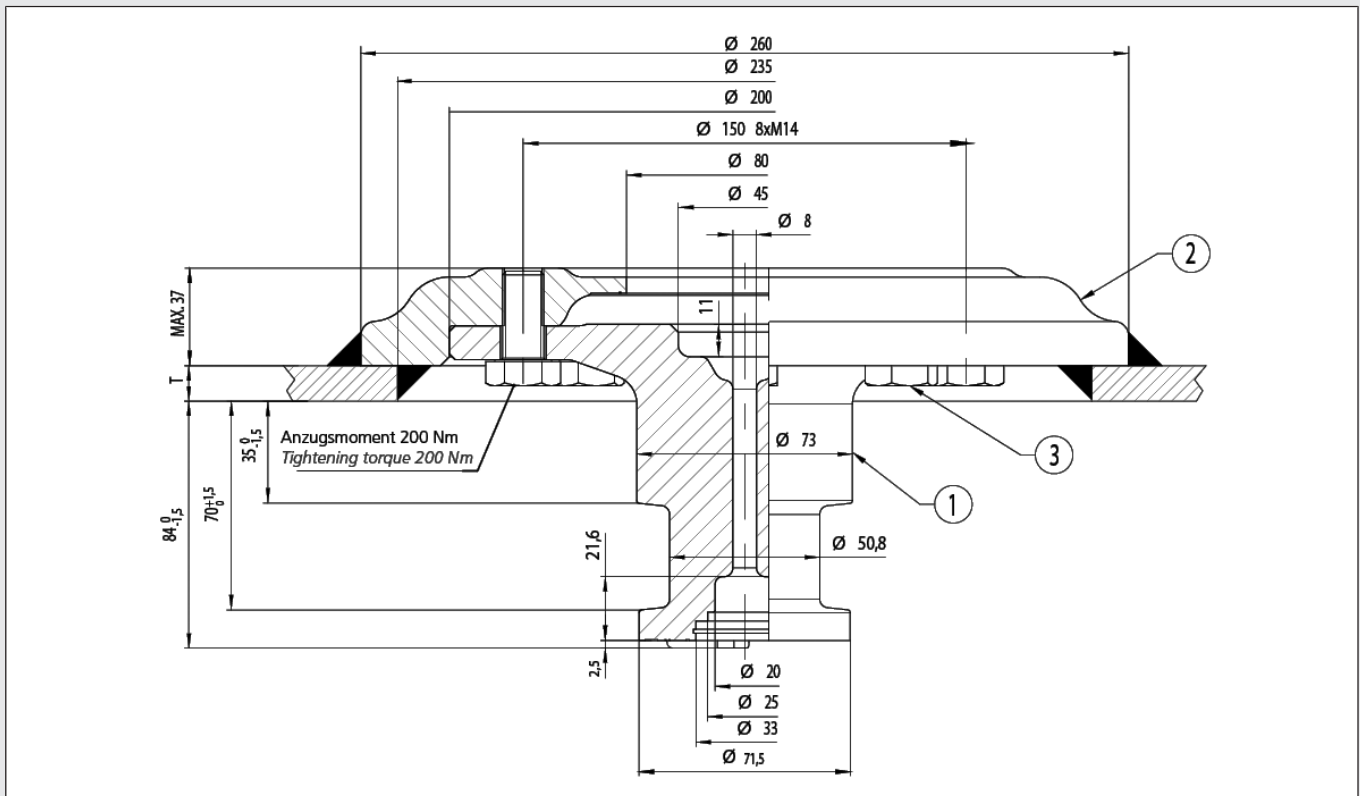


- Diameter (Inch): 2
- Pitch circle diameter (mm): 150
- D-value (kN): 165
- Weight (kg): 12

TYPE APPROVAL:

- ECE type approval no.: E1*55R01/09*2422*01

Dimensions



Technical Data

Item	Component	Nominal [Inch]	Plate thickness [mm]	Order no.
KZ	King pin cpl.	2	12	1030300000320
KZ	King pin cpl.	2	10	1030300000330
KZ	King pin cpl.	2	8	1030300000340
1	King pin - Kit	2		2108300000250
2	Mounting flange		12	2031100000060
2	Mounting flange		10	2031100000070
2	Mounting flange		8	2031100000100
3	Hex socket head screw M14x30 (8 pcs. per kingpin)			2088100000050

- Note: Self-locking bolts may only be used once

Type 90S15

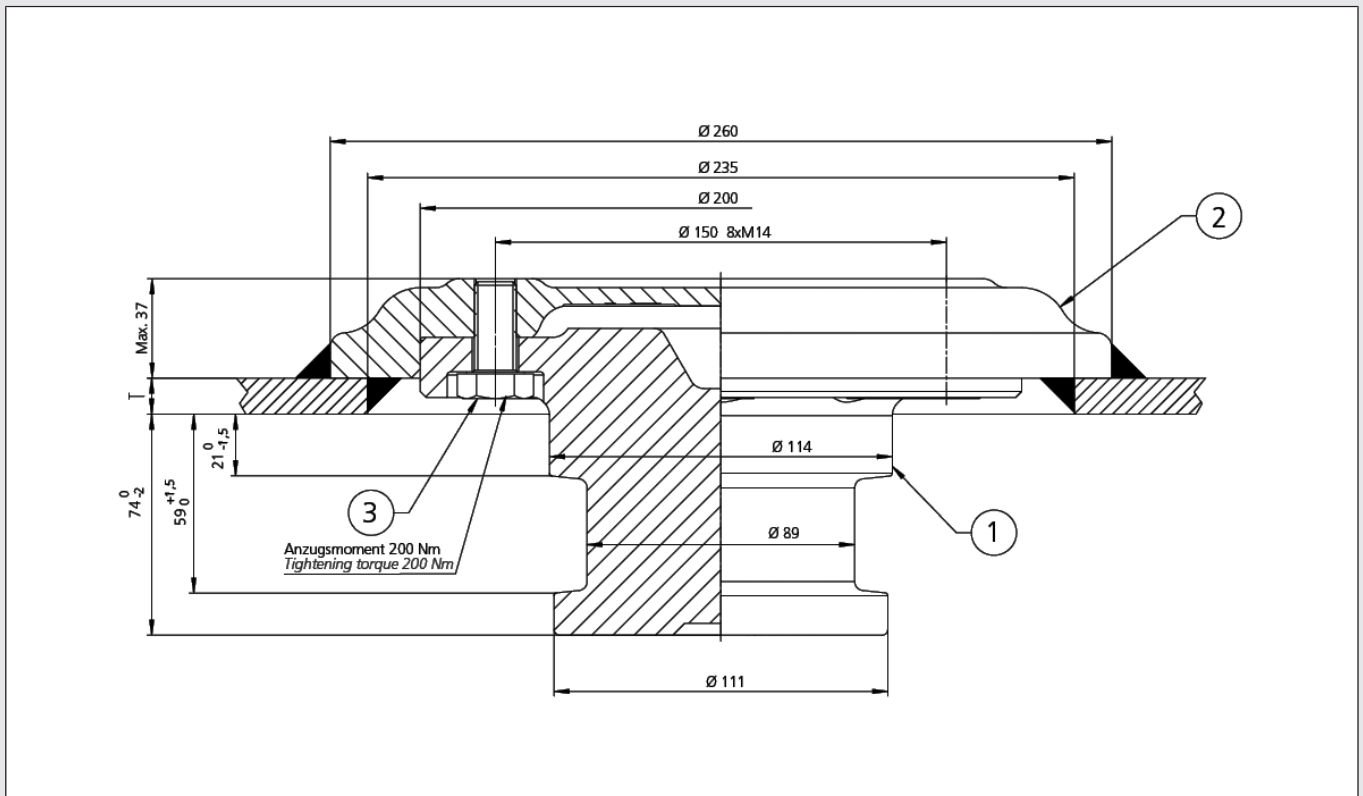


- Diameter (Inch): 3½
- Mounting: bolted flange
- Type: flanged
- Pitch circle diameter (mm): 150
- D-value (kN): 165
- Weight (kg): 17.0

TYPE APPROVAL:

- ECE type approval no.: E1*55R01/09*2371*02

Dimensions



- Tightening torque SAF kingpin: 200 Nm

Technical Data

Item	Component	Nominal [Inch]	Plate thickness a [mm]	Flange height b [mm]	Colour code	Order no.
KZ	King pin cpl.	3.5	8	35 +2/-0	white	1030300000110
KZ	King pin cpl.	3.5	10	33 +2/-0	blue	1030300000100
KZ	King pin cpl.	3.5	12	33 +2/-0	yellow	1030300000090
1	King pin - Kit	3.5"				662101169K
2	Mounting flange		8	35 +2/-0	white	2031100000040
2	Mounting flange		10	33 +2/-0	blue	2031100000030
2	Mounting flange		12	33 +2/-0	yellow	2031100000020
3	Hex socket head screw M14x30 (8 pcs. per kingpin)					2088100000050

- Kingpins can be replaced from below
- With fitting option of pin (2") no. 662 102 109K
- Note: Self-locking bolts may only be used once

Type 50S18



165 kN



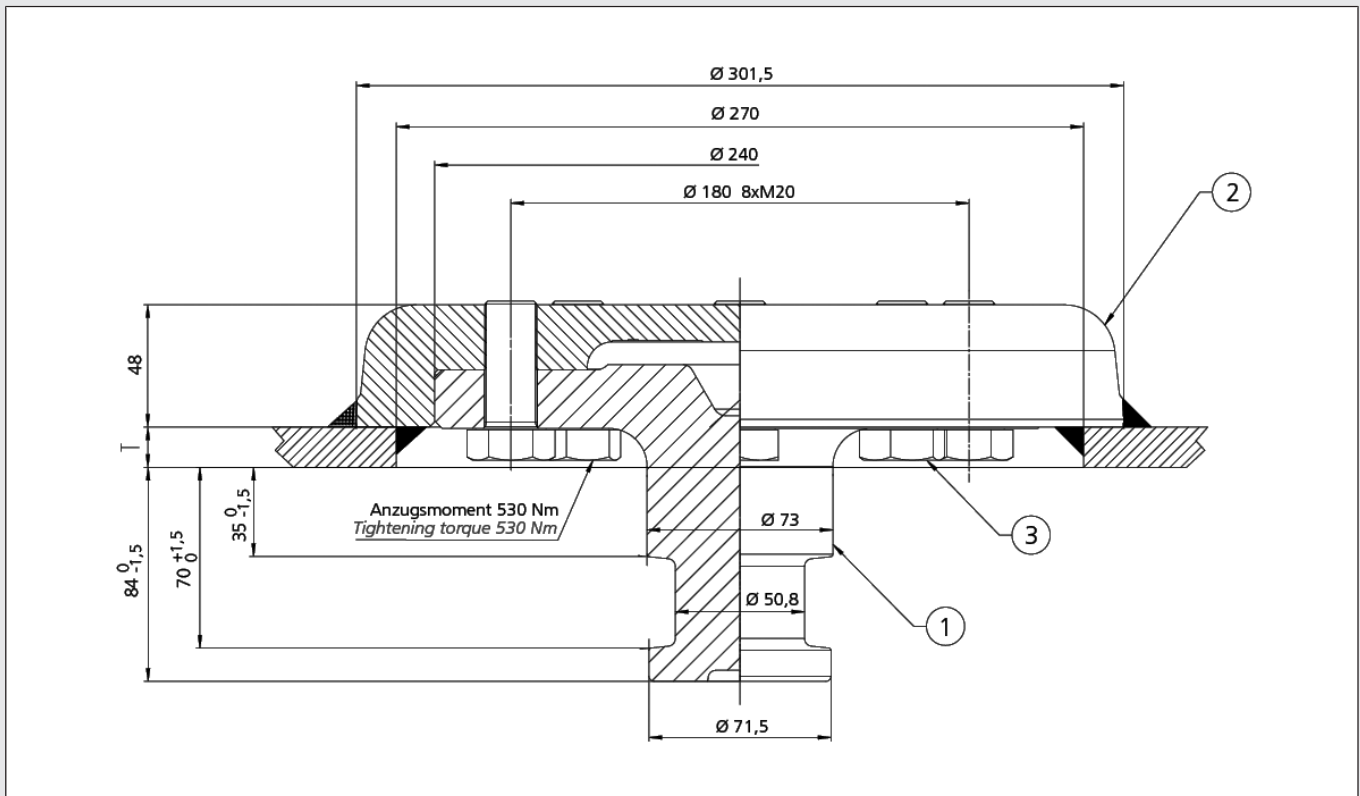
175 kN

- Diameter (Inch): 2
- Mounting: bolted flange
- Type: flanged
- Pitch circle diameter (mm): 180
- D-value (kN): 165
- Weight (kg): 27.5

TYPE APPROVAL:

- ECE type approval no.: E1*55R01/09*2418*01

Dimensions



Technical Data

Item	Component	Nominal [Inch]	Plate thickness [mm]	Order no.
165 kN				
KZ	King pin cpl.	2	16	1030300000120
1	King pin - Kit	2		662102022K
2	Mounting flange		16	2031100000090
3	Hex socket head screw M20x50 (8 pcs. per kingpin)			2088100000060
175 kN				
KZ	King pin cpl.	2	16	1030300000400
1	King pin - Kit	2		21083000000370
2	Mounting flange		16	2031100000090
3	Hex socket head screw M20x50 (8 pcs. per kingpin)			2088100000060

- Kingpins can be replaced from below
- With fitting option of pin (3½") no. 662 102 021K
- Note: Self-locking bolts may only be used once

Type 90S18

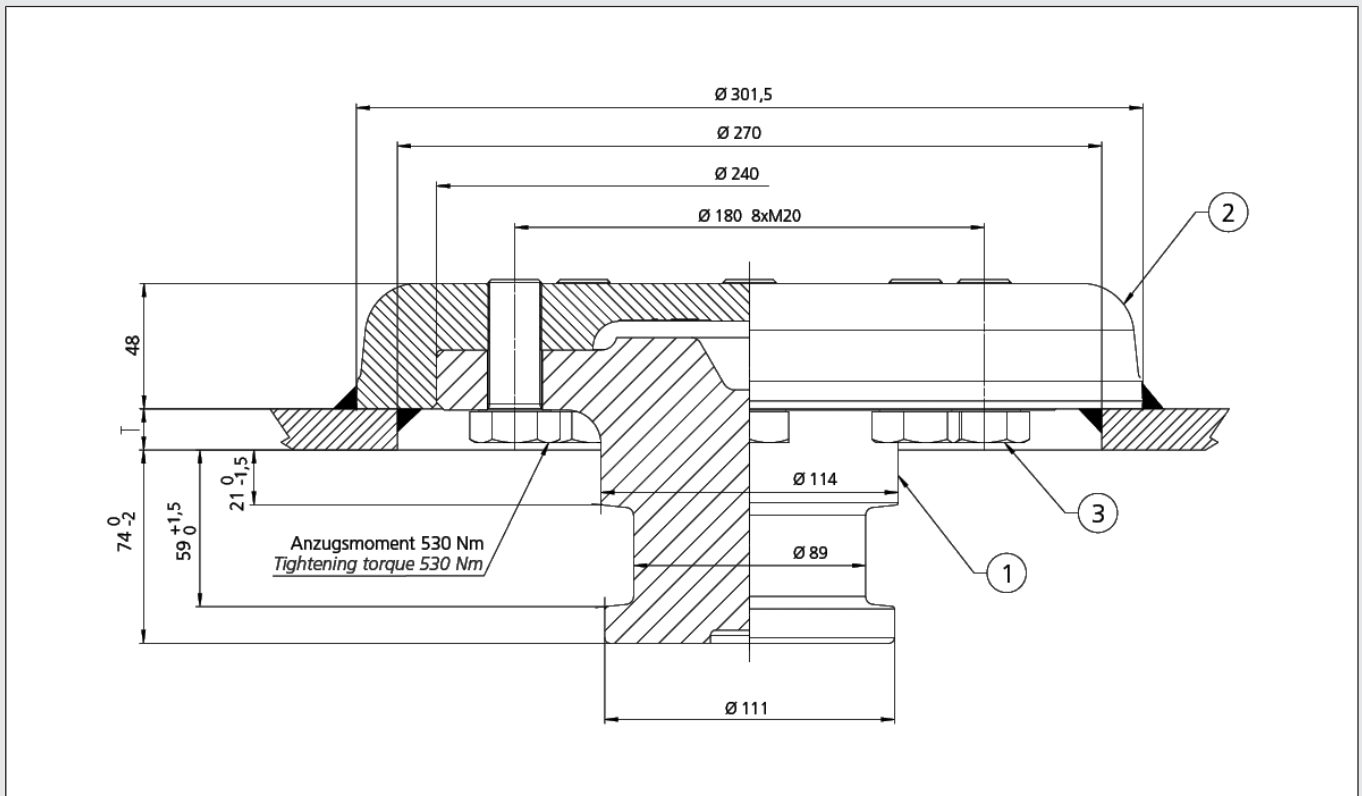


- Diameter (Inch): 3½
- Mounting: bolted flange
- Type: flanged
- Pitch circle diameter (mm): 180
- D-value (kN): 320
- Weight (kg): 30.7

TYPE APPROVAL:

- ECE type approval no.: E1*55R01/09*2426*01

Dimensions



Technical Data

Item	Component	Nominal [Inch]	Plate thickness a [mm]	Flange height b [mm]	Order no.
KZ	King pin - Kit	3.5	16	48	1030300000140
1	King pin - Kit	3.5			662102021K
2	Mounting flange		16	48	2031100000090
3	Hex socket head screw M20x50 (8 pcs. per kingpin)				2088100000060

- Kingpins can be replaced from below
- With fitting option of pin (2") no. 662102022K
- Note: Self-locking bolts may only be used once

Type 90S18L

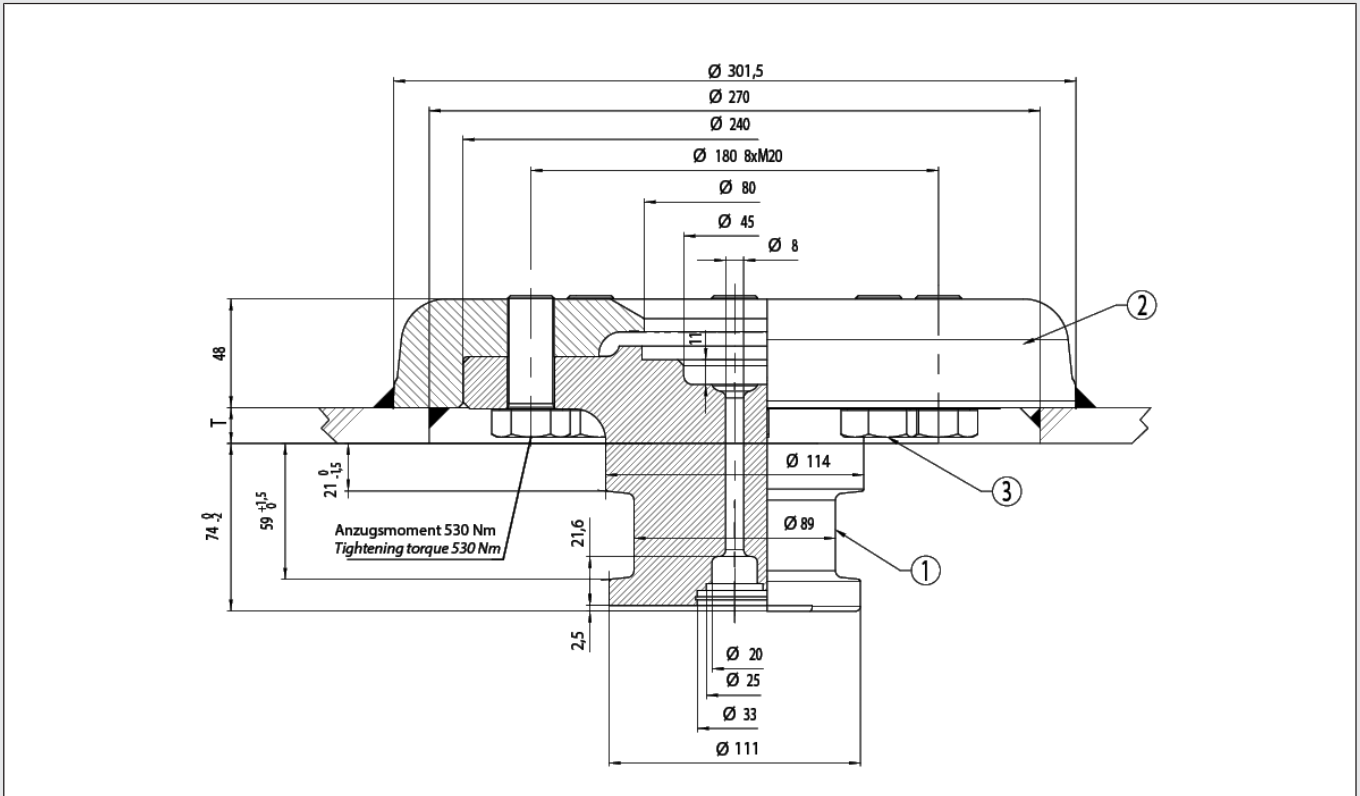


- Diameter (Inch): 3½
- Pitch circle diameter (mm): 180
- D-value (kN): 320
- Weight (kg): 30.3

TYPE APPROVAL:

- ECE type approval no.: E1*55R01/09*2425*01

Dimensions



Technical Data

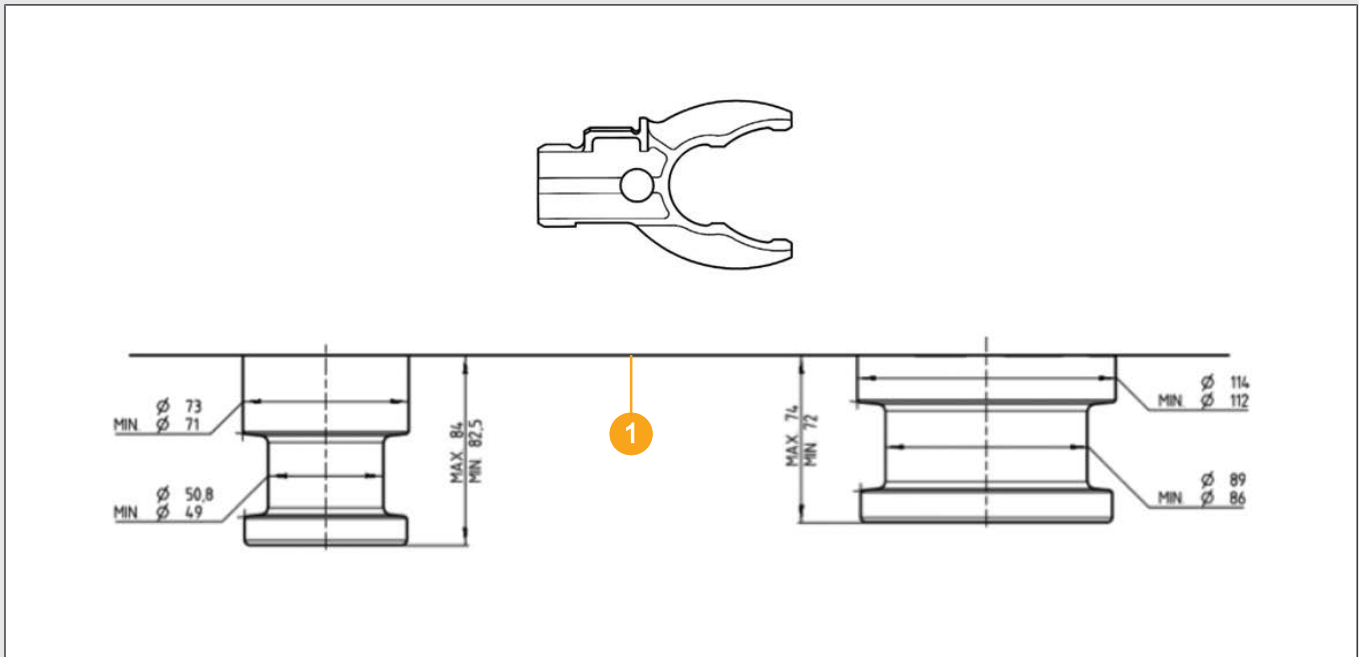
Item	Component	Nominal [Inch]	Plate thickness [mm]	Order no.
KZ	King pin cpl.	3.5	16	1030300000350
1	King pin - Kit	3.5		2108300000290
2	Mounting flange	3.5	16	2031100000080
3	Hex socket head screw M20x50 (8 pcs. per kingpin)			2088100000060

- Note: Self-locking bolts may only be used once

Reference Gauge

If the readings are lower than the limits shown here, the kingpins or wear rings must be replaced by original SAF-HOLLAND parts.

Dimensions

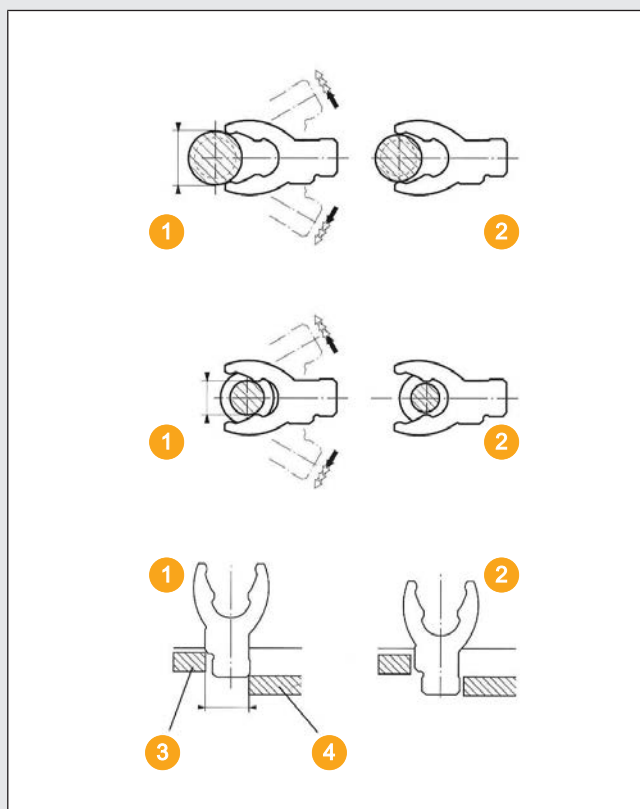


1 | Lower edge of semi-trailer plate

Technical Data

Type	Nominal [Inch]	Dimensions [mm]	Weight [kg]	Order no.
Reference gauge	2	166x108mm	0,155	659920032
Reference gauge	3.5	222x149mm	0,442	659920033

Operating Instructions



1	o.k.	3	Wear ring
2	Replace	4	Coupler jaw

The gauge surfaces may not slide over the SAF-HOLLAND kingpins. Measure lengthways and crossways, as well as at various heights.

After performing these checks, thoroughly coat the semi-trailer plate and the kingpin as well as the top of the fifth wheel plate, the locking mechanism and the wear ring, using a long life, high pressure grease with molybdenum or graphite additive. At short intervals, but at least at every lubrication servicing of the semi-trailer tractor, the fifth wheel, semi-trailer plate and the kingpin must be recoated with lubricant.

The reference gauge should not be able to slide into the closed fifth wheel locking mechanism from above. Measure lengthways and crossways.

Safety Instructions

Before hitching and especially before attaching the semi-trailer for the first time and after each lubrication, ensure that the locking mechanism of the fifth wheel is in the "hitching" position.

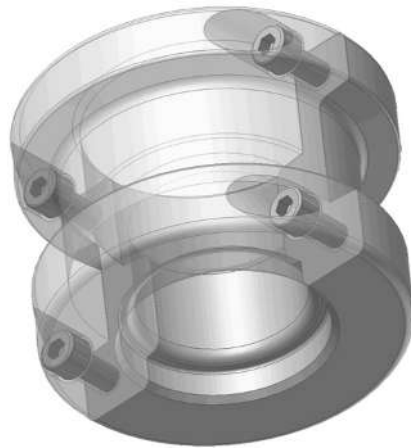
After hitching by attaching the carabiner hook or by setting the safety lever (with automatic locking), check whether the locking mechanism is completely closed.

After hitching the fifth wheel

- with carabiner hook: attach it
- with automatic latch: check whether it is engaged and the cam does not protrude next to the operating handle.

Important: Perform PULL TEST in a low gear.

Kingpin adaptor 2" to 3½"



- Kingpin adaptor to couple a 2" kingpin on a 3½" fifth wheel
- The D-value of the 2" kingpin remains unchanged
- Kingpin is not included when ordering the adaptor
- **Important:**
The adaptor is suitable for temporary use on private sites only, e.g. on non public park grounds or for short tow runs.

Technical Data

Item	Type	Note	Pcs.	Order no.
1-3	King pin - adaptor 2"->3.5"	incl. Screws	1	662101100

Dimensions

