

HD50/70

Automatic couplings

The V.ORLANDI HD50/70 series is a 50/70 mm manual drawbar coupling, which is designed for steering drawbar trailers. This coupling series is homologated according to ECE R55 standard and it is easy to handle and can be maintained very fast and cost efficient.



Technical data

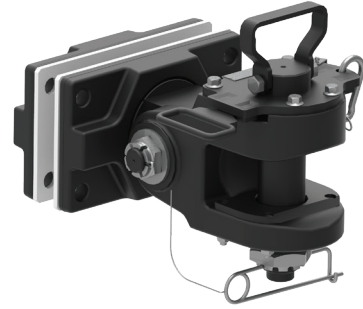
Flange size	280 × 140 [mm]
D-Value	400 - 800 [kN]
Weight	72,5 - 111 [kg]
Homologation	ECE R55 (class S)
Drawbar eye standard	ECE R55 (class S); CUNA 438-55 (Cat VII – VIII)

Specs

- Heavy weight transport
- Oscillating coupling
- $\pm 95^\circ$ steering angle and $\pm 22^\circ$ vertical oscillation
- High towing values
- Proved according to the latest ECE-R55

HD50/70

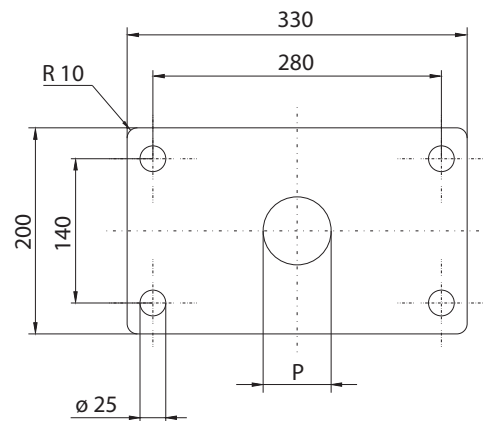
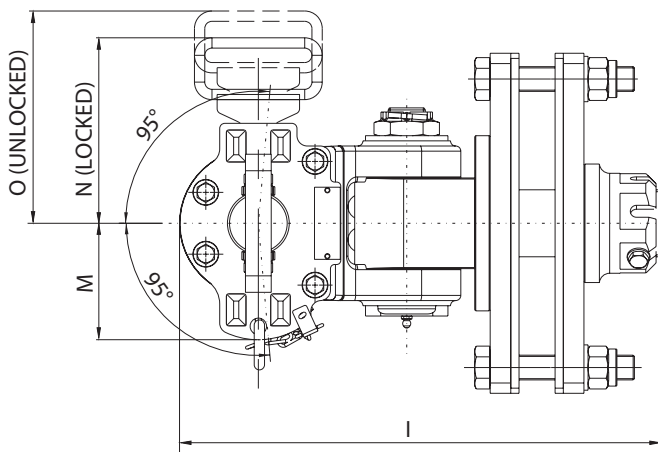
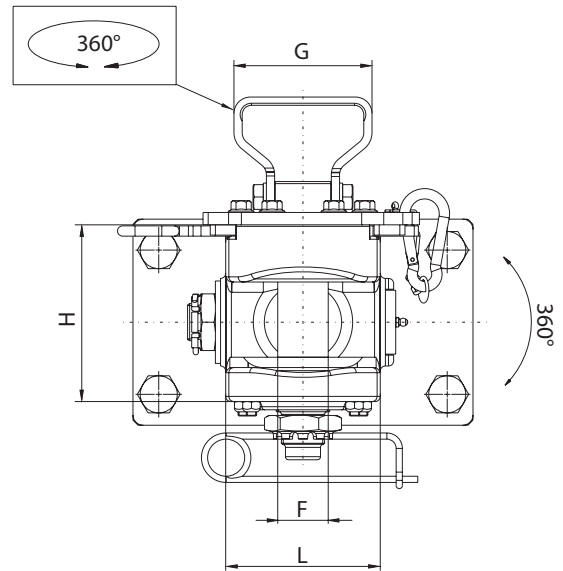
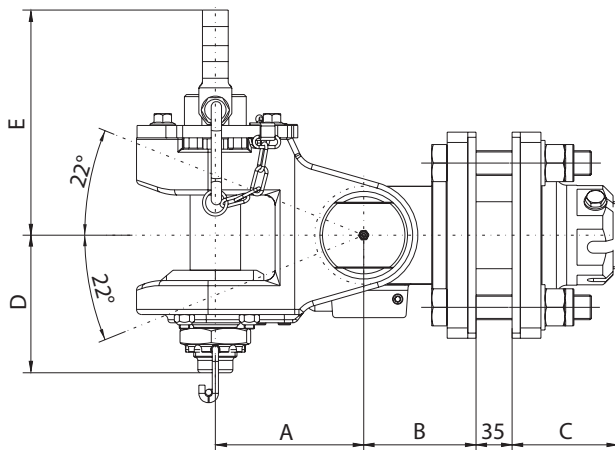
Automatic couplings



For drawbar eyes	∅	∅	CUNA NC 438-55 ECE R55
	50	70	

TECHNICAL DATA

Part number	Hole pattern [mm]	D-Value [kN]	Weight [kg]	ECE R55
				Homologation
HD50251	280 × 140	400	72.5	E32 01-0017
HD70501	280 × 140	800	111	E32 01-0019



Part number	A [mm]	B [mm]	C [mm]	D [mm]	E [mm]	F [mm]	G [mm]	H [mm]	I [mm]	L [mm]	M [mm]	N [mm]	O [mm]	P [mm]
HD50521	144	109	103	133.5	218,5	∅ 49	134	171.5	467.5	150	115	180	206	∅ 66
HD70501	167	129	121	158.5	237,5	∅ 69	144	203.5	543	180	123	194	222	∅ 86