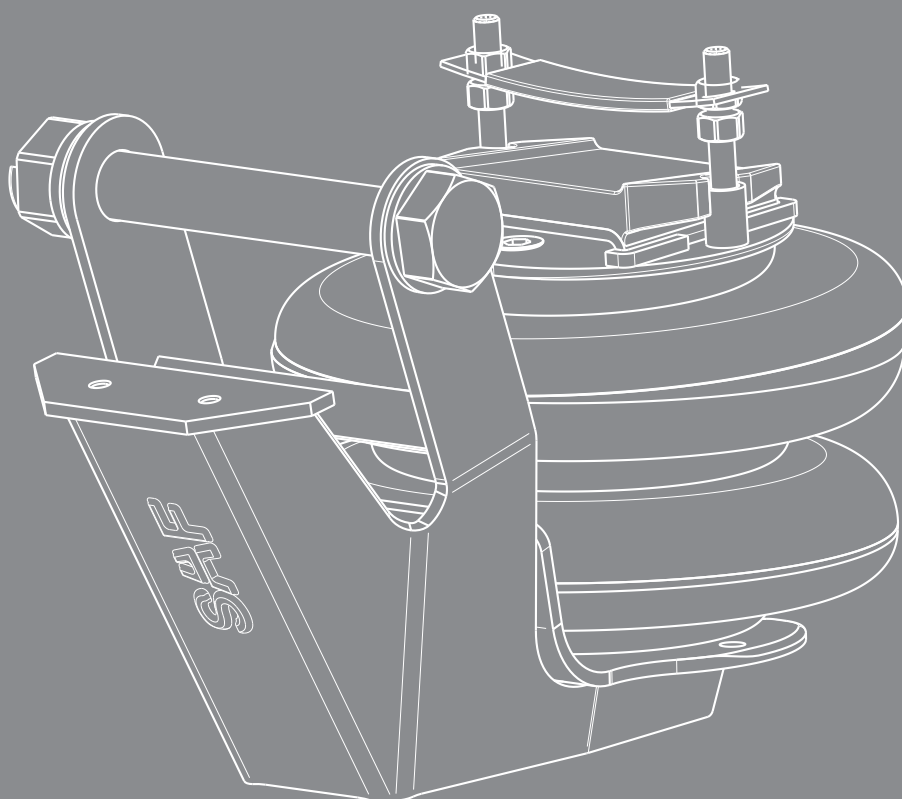


Installation instructions

Two sided lift for brake drum
Type MODUL



Two side axle lift for axles with drum brake

We recommend a minimum of **100 mm** lift travel when setting the ride height. Use of 19.5" tyres possible in combination with two sided axle lift if the clearance to the ground is taken into account. With installation of a two sided axle lift a minimum distance of **15 mm** between lift air bag and brake drum are to be considered.

For axles with disc brake on request.

Calculation of clearance between lift air bag and tyre

The clearance must be at least **25 mm**.

Formula:

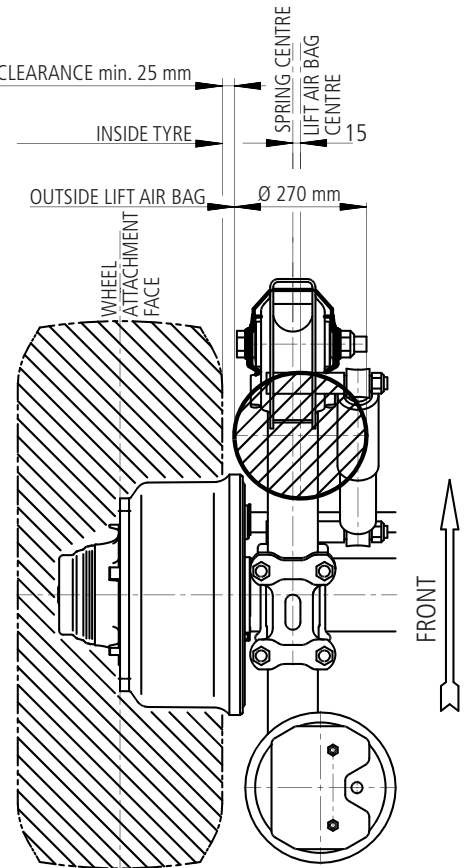
$$\frac{AX - LM - \text{max. tyre width} - 270}{2} + 15 = \text{Clearance}$$

Example with: M36/2500EN29 S9-4218

- distance wheel attachment faces: 2040 mm
- spring centre: 1300 mm
- tyre width (max.): 405 mm
(E.T.R.TO. Norm for tyre 385/65R22.5")
- lift air bag diameter: 270 mm
- lift air bag offset: 15 mm

$$\frac{2040 - 1300 - 405 - 270}{2} + 15 = \text{Clearance} = 47.5 > 25 \text{ mm}$$

Installation combination of the two side axle lift for modul series with single leaf trailing arm.



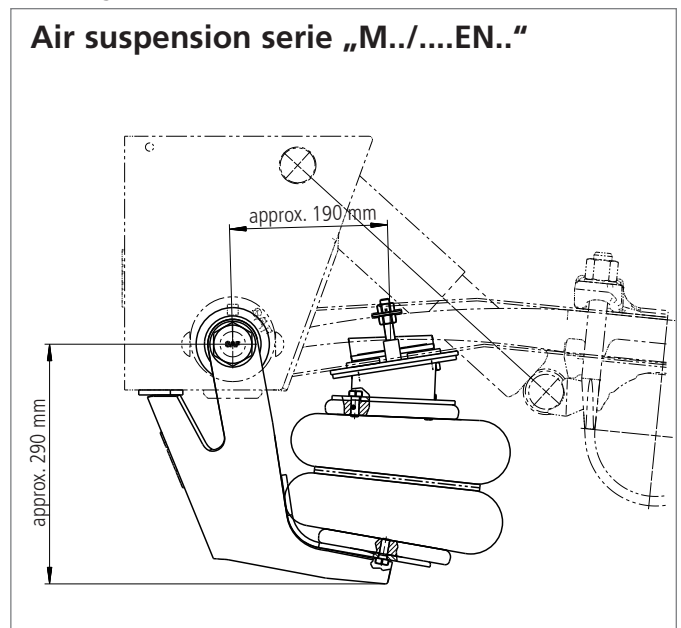
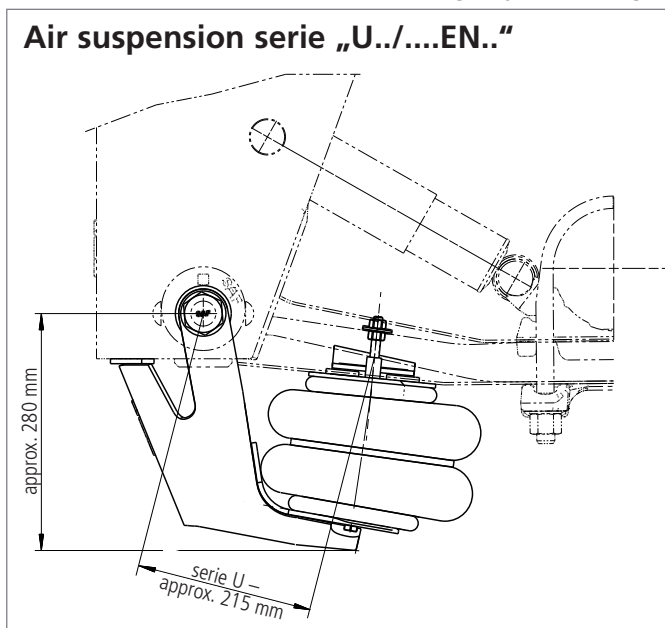
Single tyre 22.5"

AX mm	LM mm	lift air bag centre mm	tyre size (example)	
			385/65R22.5"	425/65R22.5"
1970	1200	1170	XXX	XXX
2040	1200	1170	XXX	XXX
2040	1300	1270	XXX	XXX
2090	1300	1270	XXX	XXX
2090	1400	1370	XXX	not possible
2140	1400	1370	XXX	XXX

Other axle combinations must be checked.

Two side axle lift types

For axles with drum brake SNK 420, single tyre and single leaf trailing arm



Kit content – two side axle lift

Per axle are two kits needed.

	U../....EN..		M../....EN..		pos.	per kit
	hanger bracket „steel“	cross member	hanger bracket „steel“	cross member		
Kit-number.:	3 027 1205 01	3 027 1216 01	3 027 1236 00	3 027 1237 00		
lift arm	2 239 0015 01	2 239 0016 01	2 239 0015 01	2 239 0016 01	(6)	1x
hexagon screw		4 343 1085 88			(6)	1x
disc		1 331 0117 00			(2)	2x
lift air bag		4 229 1004 00			(7)	1x
plate		4 284 6046 02			(9)	1x
counter sunk screw		4 343 5010 88			(10)	2x
distance piece		4 095 0065 00			(13)	1x
threaded bolt		4 178 2004 88			(16)	2x
clamping plate		4 350 0101 00			(15)	1x
hexagon nut		4 342 0004 60			(14)	4x
hexagon screw		4 343 1006 88			(8)	2x



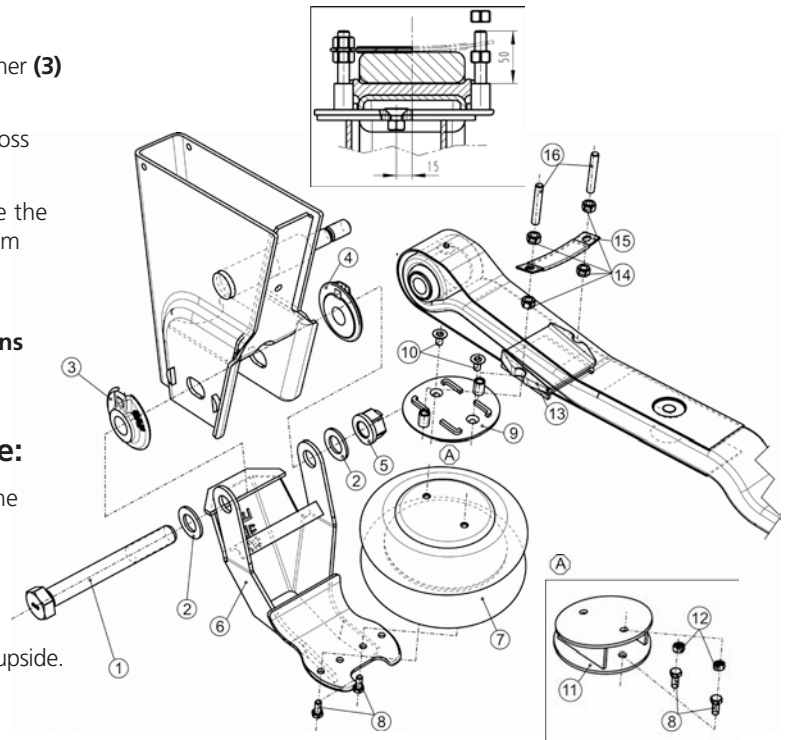
hexagon screw	4 343 1006 88	(8)	2x
distance piece	2 095 0074 00	(11)	1x
hexagon nut	4 342 0041 10	(12)	2x

Installation of the lift arm:

- Remove the existing pivot bolt mounting. Eccentric washer (3) and thrust washer (4) re-use.
- Position the lift arm (6) over the hanger bracket or cross member.
- Mount the pivot bolt according to the illustration. Use the hexagon screw (1), discs (2) and lock nut (5) new from the kit. Washers (3) and (4) of the demounting.
- Important: the pivot bolt must be tightened according to the SAF-HOLLAND torque regulations in the ride height. 400 Nm + 120°**

Installation of lift air bag/ distance piece:

- Fix the lift air bag (7) from underneath with two of the enclosed screws (8) to the lift arm (6). **Tightening torque 50 Nm.** The air intake of the lift air bag must, as illustrated, point downwards to the lift arm (6).
- Mount the plate (9) with screws (10) to the lift air bag upside. **Tightening torque 50 Nm**



For air suspension serie M is an extra distance piece (11) needed between lift air bag upper plate and plate (9), to be mounted with screws (8) and nuts (12). **Tightening torque 50 Nm**

- Position the distance piece (13) between protection plate and trailing arm according to the type drawing (page 77 Design manual MODUL).
- Screw the threaded bolts (16) to the plate (9) as illustrated. **Tightening torque 25-30 Nm**
- Lift air bag (7), plate (9) and distance piece (11, 13 and 15) are locked in position by the threaded bolts (16) and fixed with the nuts (14). **Tightening torque 50 Nm**

Max. lift air bag pressure 6.0 bar; residual pressure 0.5 bar!



Emergency Hotline +49 6095 301-247

Customer Service +49 6095 301-602

Spare Parts +49 6095 301-301

Fax +49 6095 301-259

service@safholland.de

www.safholland.com