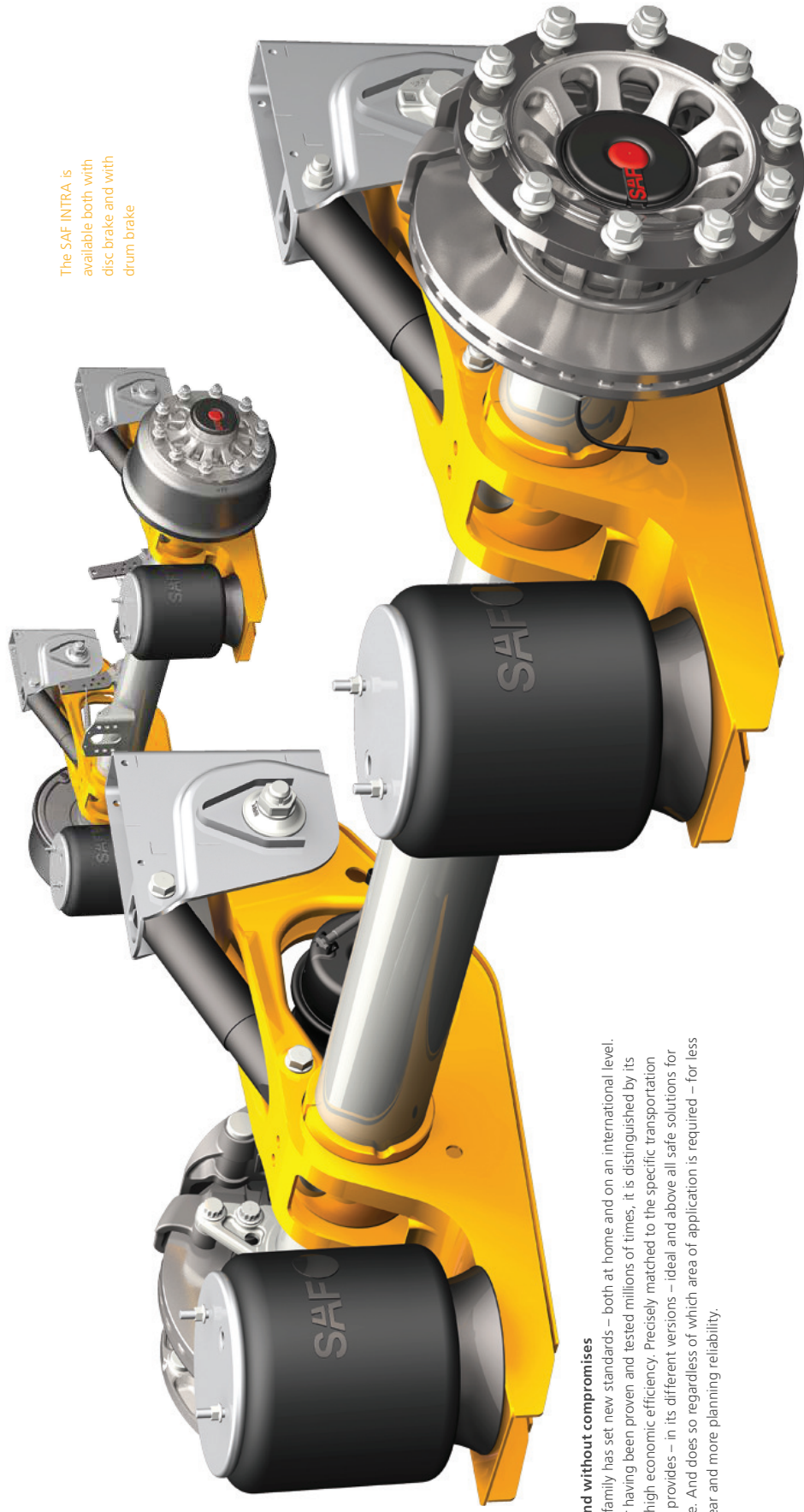


# THE INTRA FAMILY



The SAF INTRA is available both with disc brake and with drum brake

## Efficient and without compromises

The INTRA family has set new standards – both at home and on an international level. Today, after having been proven and tested millions of times, it is distinguished by its particularly high economic efficiency. Precisely matched to the specific transportation task, INTRA provides – in its different versions – ideal and above all safe solutions for the 9t range. And does so regardless of which area of application is required – for less wear and tear and more planning reliability.

# ONE UNIT – MANY VARIANTS AND APPLICATIONS ...

Especially protected due to its position in the functional suspension arm: the shock absorber



The patented SAFE-GUARD-DESIGN of the functional suspension arm protects the brake cylinder reliably from damage

Long-term conservation of value and functional safety through sophisticated cathodic dip coating with optimum corrosion protection down to the last detail

Functional suspension arm and axle tube form an inseparable and maintenance-free unit. This eliminates the need for U-bolts, clamping plates and nuts. The entire design is extremely robust and yet very lightweight

# SAF INTRA MEGA

The perfect system solution for volume and weight-optimised semi-trailers and trailers.

With increasing transport volume, the market share of volume-optimised semi-trailers is growing at the same time. SAF-HOLLAND has prepared itself for this development and offers, based on its modular INTRA TECHNOLOGY, a complete system solution: the MEGA of the SAF INTRADISC plus INTEGRAL.

A SAF system solution with all the advantages of the INTRA TECHNOLOGY:

- maintenance-free connection between the suspension arm and the axle tube
- weight from 389 kg with 19.5" SBS 1918 disc brake without brake cylinder
- weight from 398 kg with 22.5" SAF disc brake without brake cylinder
- also as a SAF self-steering axle
- also as CD CUSTOM DESIGN VERSION for special applications
- SAF-HOLLAND EXCELLENCE GUARANTEE\*
- SAF-HOLLAND INTEGRAL GUARANTEE\*

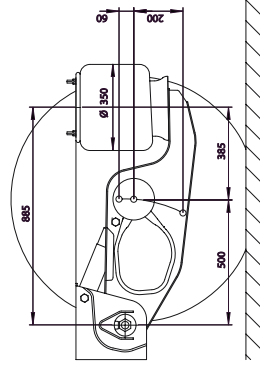
\*according to the SAF-HOLLAND guarantee conditions

## TECHNICAL DATA

For all requirements of vehicle manufacturers and transportation companies

- maximum axle load 9t
- driving height 230 mm
- axle travel of 260 mm for loading ramp adjustment
- suitable for the new generation of tyres with sizes such as 455/40 R22.5", 445/45 R19.5" and 435/50 R19.5" aluminium and steel wheels
- use of 19.5" and 22.5" disc and drum brakes

MEGA IS ALSO AVAILABLE WITH AIRVENT WHEEL END!



Total suspension travel:  
260 mm

More offset:  
The new functional suspension arm allows low ride heights



Designed asymmetrically:  
The spring offset ensures freedom of choice in terms of tyres

# OPTIMONS

ABS SENSING

SAF TWO-SIDE AXLE LIFT

SAF ONE-SIDE AXLE LIFT

SAF KILOMETRE COUNTER

SAF TIRE PILOT

BRAKE CYLINDERS

SAF UP TRAIN LOADING SYSTEM

PAD WEAR SENSING

SAF PROTECTOR SHEET

SAF PC PREMIUM COATED

SAF REINFORCED AIR SPRINGS

# OPTIONS FOR THE AXLES

PRODUCT	SAF ABS SENSING	SAF TWO-SIDE AXLE LIFT	SAF ONE-SIDE AXLE LIFT	SAF HUBODMETER	SAF TIRE PILOT	SAF BRAKE CHAMBERS	SAF UP TRAIN LOADING SYSTEM	SAF PAD WEAR SENSING	SAF PROTECTOR SHEET	SAF PC PREMIUM COATED	SAF REINFORCED AIR SPRINGS
DESCRIPTION	- exciter ring and sensor holder (as standard/pre-assembly) - can be activated using simple and reliable plug connections	- for 22.5" wheels - only weighs approx. 21 kg per axle - very simple retrofit	- specifically for low ride heights - only weighs approx. 30 kg - very simple retrofit	- measures the exact mileage of trailers - simple retrofit - quick and reliable mounting	- tyre-inflating system for trailers and semi-trailers - monitoring and preservation of the set tire pressure in the trailer	- completes surface coating - high-quality internal components - fully integrated air connections	- one of the lightest train loading suspension on the market - springs not clamped during rail loading	- simple retrofit - can be connected to the Trailer ABS or to a separate control and display unit	- protects the brake disc against stone chipping and other foreign objects	- with our new 3-layer coating protection with up to 50 % Zinc content - very high corrosion protection	- with steel plungers for extreme loads
AXLE											
SAF INTRADISC PLUS INTEGRAL	X	X	X	X	X	X	X	X	X	X	X
SAF INTRADISC AIRVENT	X	X	X	X	X	X	X	X	X	X	X
SAF INTRADRUM	X	X	X	X	X	X	X	standard	standard	-	X
SAF INTRA CD DRUM	X	X	X	X	X	X	on request	-	standard	-	X
SAF INTRA CD DISC	X	X	X	X	X	X	on request	X	X	X	X
SAF INTRA CD TRAK	X	-	-	X	-	X	-	X	X	-	X
SAF INTRA MEGA	X	X	X	X	X	X	X	X	X	X	X
SAF INTRA SELF-STEERING AXLE	X	-	-	X	X	X	X	X	X	-	X



TRAILER AXLES AND  
SUSPENSION SYSTEMS



COUPLING AND LIFTING  
TECHNOLOGIES



SUSPENSIONS FOR  
TRUCKS AND BUSES



SUSPENSIONS AND COMPONENTS  
FOR COMMERCIAL VEHICLES



V. ORLANDI

COUPLING AND LIFTING  
TECHNOLOGIES



TRAILER AXLES AND  
SUSPENSIONS SYSTEMS